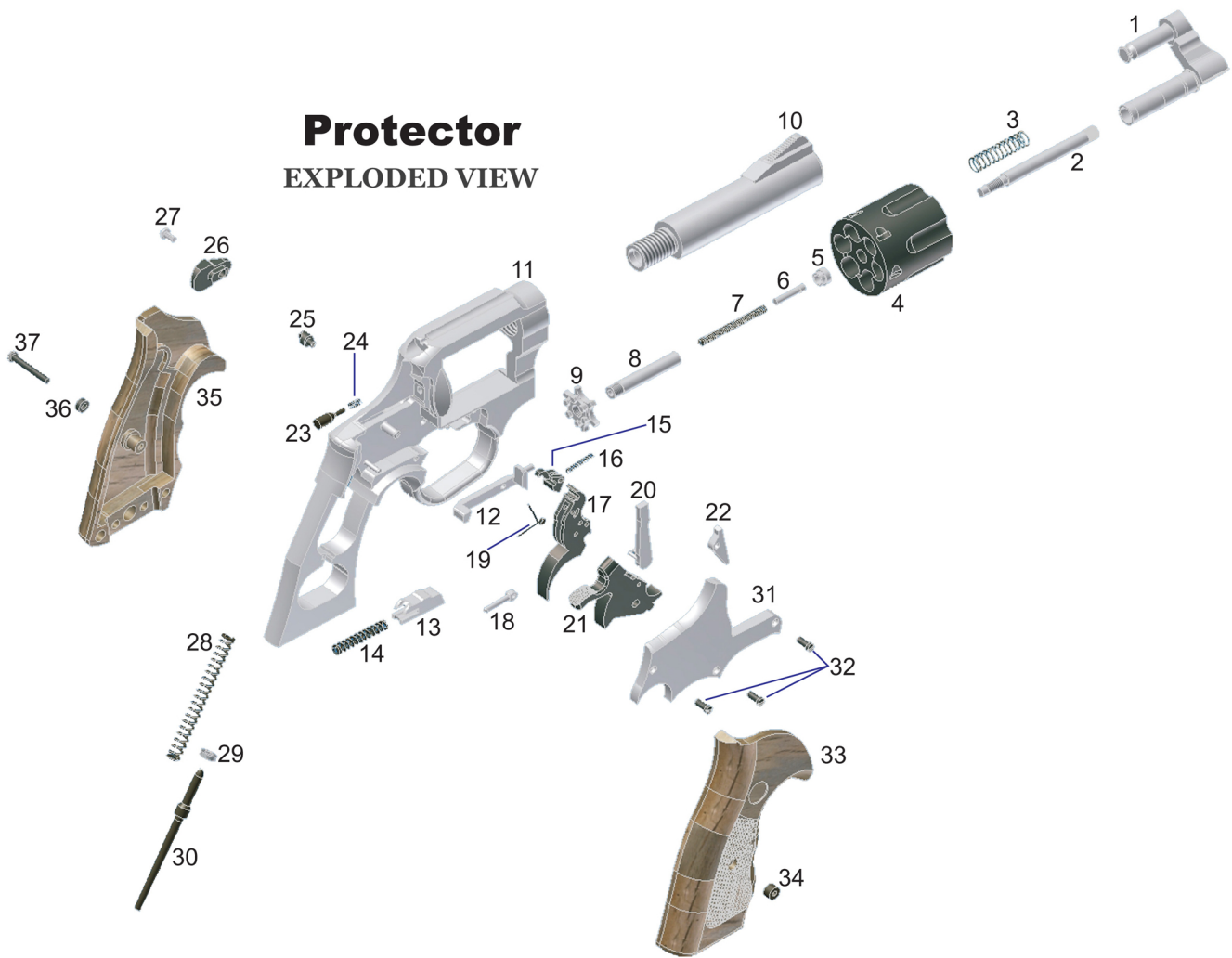


# Protector

## EXPLODED VIEW



## Protector Parts Name

- |                          |                                     |
|--------------------------|-------------------------------------|
| 1. Cranelink             | 19. Hand Spring                     |
| 2. Extractor Rod         | 20. Hand                            |
| 3. Extractor Spring      | 21. Hammer                          |
| 4. Cylinder              | 22. Pawl                            |
| 5. Extractor Rod Bushing | 23. Firing Pin                      |
| 6. Center Pin            | 24. Firing Pin Spring               |
| 7. Center Pin Spring     | 25. Cylinder Block                  |
| 8. Extractor Bushing     | 26. Thumb Piece                     |
| 9. Extractor Star        | 27. Thumb Piece Screw               |
| 10. Barrel               | 28. Hammer Guide Spring             |
| 11. Frame                | 29. Hammer Guide Bushing            |
| 12. Bolt                 | 30. Hammer Guide                    |
| 13. Rebound Slide        | 31. Slide Plate                     |
| 14. Rebound Slide Spring | 32. Slide Plate Stove Bolt (3 pcs.) |
| 15. Cylinder Stop        | 33. Grip Right                      |
| 16. Cylinder Stop Spring | 34. Grip Cap                        |
| 17. Trigger              | 35. Grip Left                       |
| 18. Trigger Lever        | 36. Grip Washer                     |
|                          | 37. Grip Stove Bolt                 |