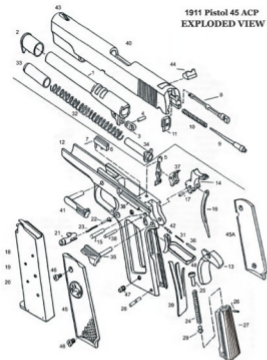


1911 Pistol 45 ACP
EXPLODED VIEW



1. Barrel
2. Barrel Bushing
3. Barrel Link
4. Barrel Link Pin
5. Disconnecter
6. Ejector
7. Ejector Retaining Pin
8. Extractor
9. Firing Pin
10. Firing Pin Spring
11. Firing Pin Stop
12. Frame (Receiver)
13. Grip Safety
14. Hammer
15. Hammer Pin
16. Hammer Strut
17. Hammer strut Pin
18. Magazine Body
19. Magazine Follower
20. Magazine Spring
21. Magazine Catch (Body)
22. Magazine Catch Lock
23. Magazine Catch Spring
24. Mainspring (Hammer Spring)
25. Mainspring Cap
26. Mainspring Cap Pin
27. Mainspring Housing
28. Mainspring Housing Pin
29. Mainspring Housing Pin Retainer
30. Plunger Tube
31. Plunger Spring (Safety/ Slide Stop)
32. Recoil Spring
33. Recoil Spring Plug
34. Recoil Spring Guide
35. Safety Lock (Thumb Safety Lever)
36. Safety Lock Plunger
37. Sear
38. Sear Pin
39. Sear Spring
40. Slide
41. Slide Stop
42. Slide Stop Plunger
43. Sight, Front, Fixed
44. Sight, Rear, Fixed
45. Stock (grip) Panel, Left
- 45.(a) Stock (grip) Panel, Right
46. Stock Screw (4)
47. Stock Screw, Bushing (4)
48. Trigger Assembly
48. Stock Screw, Bushing (4)